

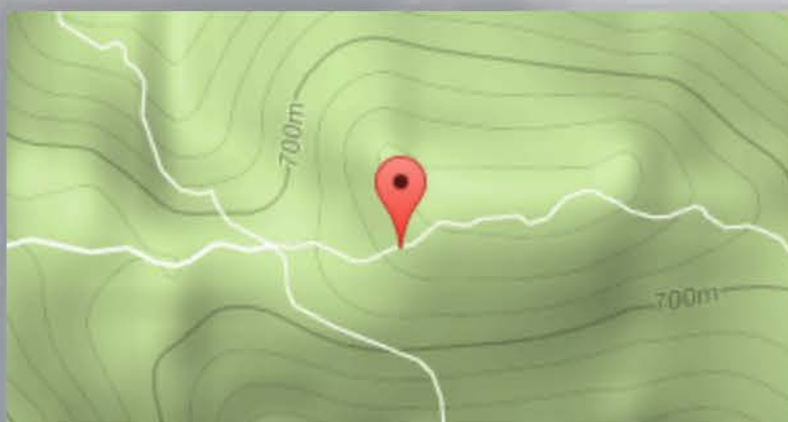
watermarks
of
google
streetview
2016

[https://www.google.com/
streetview/#staircases-of-
hong-kong/maclehose-trail-
section-8-1](https://www.google.com/streetview/#staircases-of-hong-kong/maclehose-trail-section-8-1)

× Staircases of Hong Kong







Maclehose Trail Section 8

[View on Google Maps](#)





ogile















②21



©2015

Digitized by Google

An aerial night photograph of a city, showing a dense grid of streets and numerous buildings illuminated with lights. The lights create a bright, glowing pattern against the dark background of the city at night. The perspective is from directly above, looking down on the urban landscape.

©2015 Google





Digitized by Google





[https://www.google.com/
streetview/#venice/doges-
palace](https://www.google.com/streetview/#venice/doges-palace)

× Venice





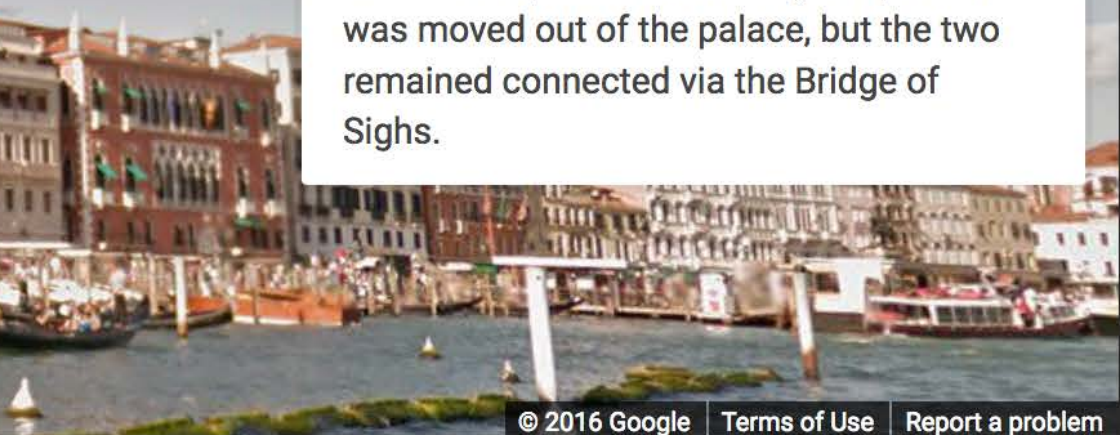
© 2013 Google





Doge's Palace

The historical residence of the Doge of Venice began construction in 1340, and was extended to overlook the Piazzetta of St. Mark's Square in 1424. The palace includes living quarters, rooms for business and the old prison. Eventually the prison was moved out of the palace, but the two remained connected via the Bridge of Sighs.













© 2013







© 2013 Google



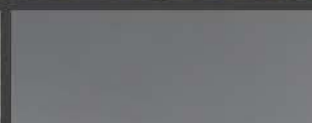
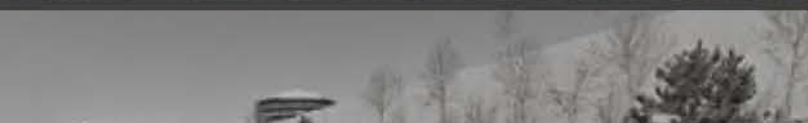
© 2013 Google



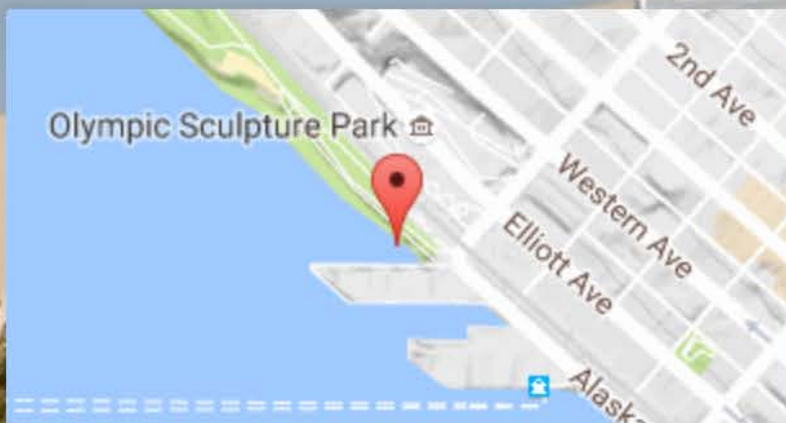
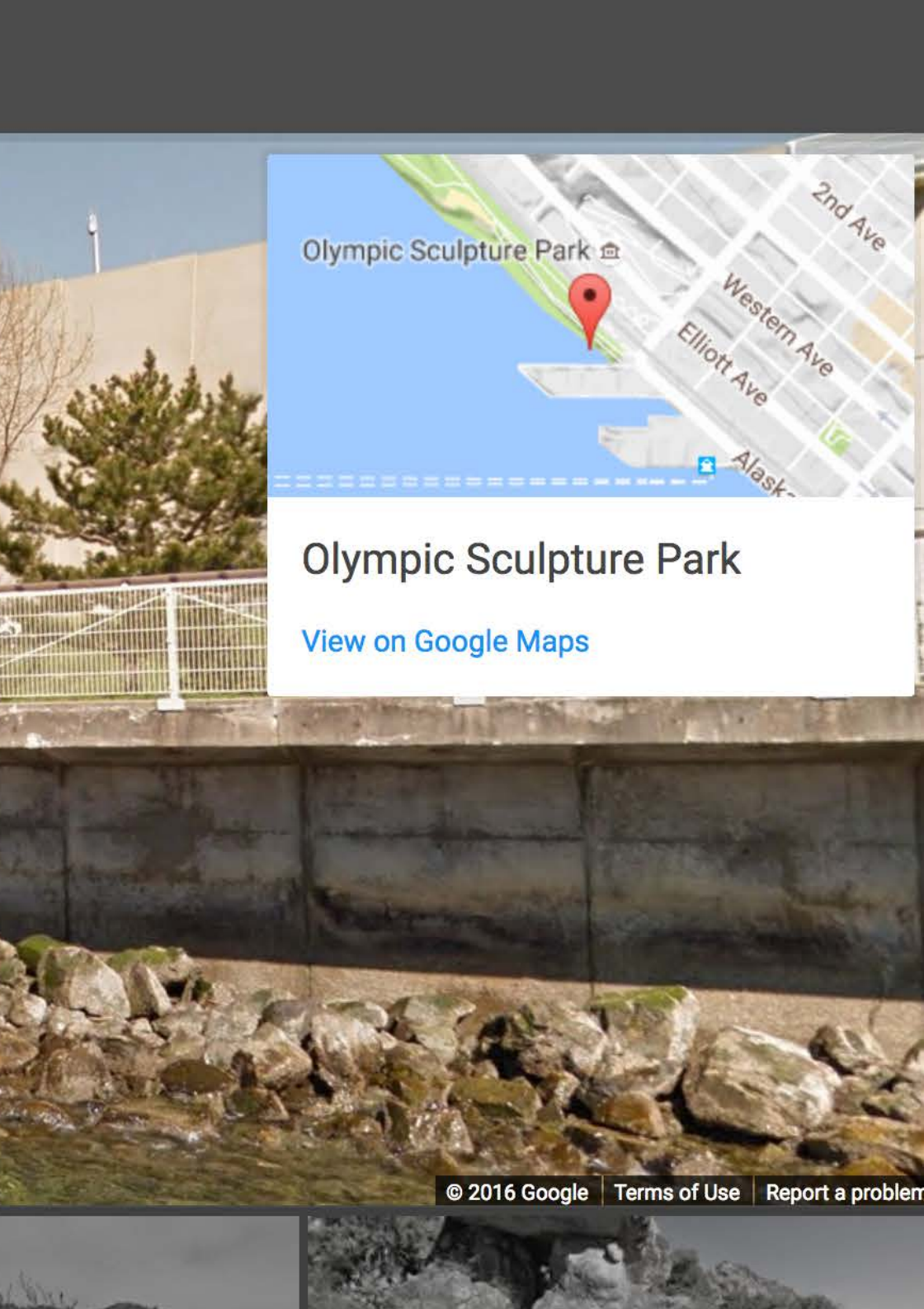


[https://www.google.com/
streetview/#us-highlights/
olympic-sculpture-park](https://www.google.com/streetview/#us-highlights/olympic-sculpture-park)

× US Highlights







Olympic Sculpture Park

[View on Google Maps](#)





Google





© 2011 Google

ogle



©2011 Google







102



Oil Google



10 20



11

George



© 2011 Google

© 20



Digitized by Google



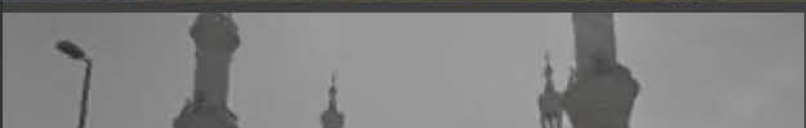




[https://www.google.com/
streetview/#fujairah-
highlights-1/sheikh-zayed-
mosque-in-fujairah](https://www.google.com/streetview/#fujairah-highlights-1/sheikh-zayed-mosque-in-fujairah)

×

Fujairah Highlights







Sheikh Zayed Mosque in Fujairah

The Sheikh Zayed Mosque is one of Fujairah's most prominent new landmarks. The mosque can accommodate 32 thousand worshippers, making it the second largest mosque in the country.

[Source]

[View on Google Maps](#)











Google































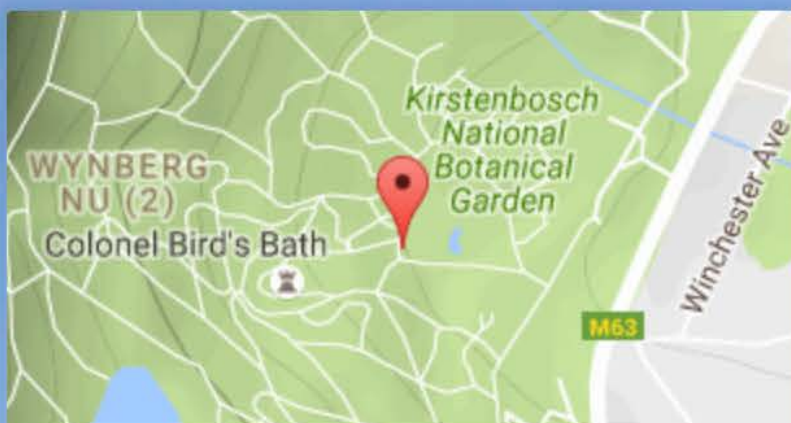


[https://www.google.com/
streetview/#south-africa-the-
mzansi-experience/
kirstenbosch-national-
botanical-garden-1](https://www.google.com/streetview/#south-africa-the-mzansi-experience/kirstenbosch-national-botanical-garden-1)

× South Africa: The Mzansi Experience







Kirstenbosch National Botanical Garden

Kirstenbosch is the name of a famous botanical garden nestled at the foot of Table Mountain in Cape Town.

[Source]

[View on Google Maps](#)





Digitized by Google





© 2012



oogle















2009 Google

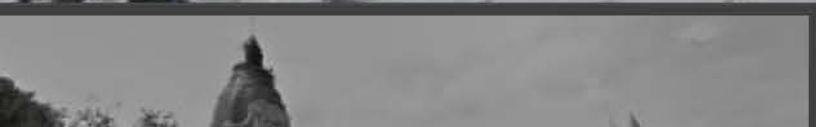




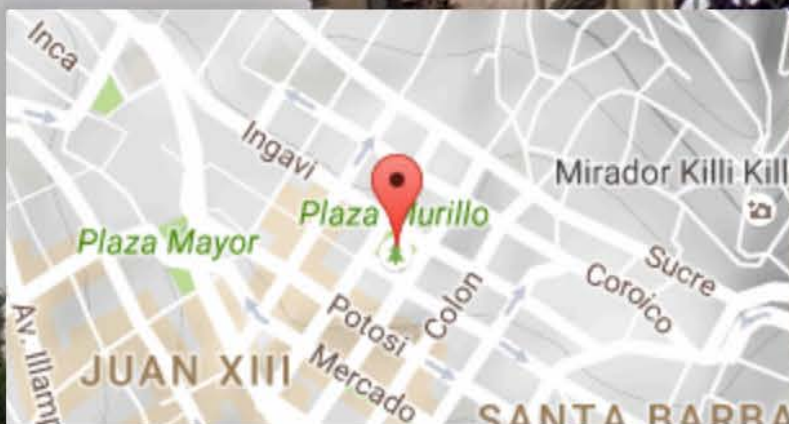


[https://www.google.com/
streetview/#bolivia-
highlights/plaza-murillo](https://www.google.com/streetview/#bolivia-highlights/plaza-murillo)

× Bolivia Highlights







Plaza Murillo

The Plaza Murillo is the central plaza of the city of La Paz and the open space most connected to the political life of Bolivia. Prominent buildings on the plaza include the Presidential Palace, National Congress of Bolivia, and the Cathedral of La Paz.

[Source]

[View on Google Maps](#)





©2016 Google



©2016 Google

A photograph showing a tree with branches and leaves in shades of green and yellow, partially obscuring a building. The building has a light-colored facade and a window with multiple panes. The image is slightly blurry and has a watermark in the bottom left corner.



ogle









Copyright © 2016 Google

©2016 Google







©2015 Google



[https://www.google.com/
streetview/#snow-country-
tourism-zone/mikuni-touge](https://www.google.com/streetview/#snow-country-tourism-zone/mikuni-touge)

× Snow Country Tourism Zone







Mikuni Touge

[View on Google Maps](#)









©2016 Google



Digitized by Google





©2016 Google









©2016 Google







©2016





Digitized by Google



2015 Google







24



R-40



©2016 Google

[https://www.google.com/
streetview/#parks-canada-
parcs-canada/york-redoubt-
national-historic-site](https://www.google.com/streetview/#parks-canada-parcs-canada/york-redoubt-national-historic-site)





The background image shows a grassy field in the foreground, a stone building with a dark doorway on the left, and a blue sky with light clouds. In the top right corner, there is a small inset map showing a road labeled 'Cortress Dr' and a blue area labeled 'Sleepy Cove'.

York Redoubt National Historic Site

"High on a bluff overlooking the entrance to Halifax Harbour sits a fortification that has helped protect this historic port throughout three centuries of Canadian history. Part of Halifax's formidable Defence Complex, York Redoubt was constructed in 1793 just as war broke out between Britain and France. Perched on a bluff at the narrowest point of the outer harbour, it offers superb views. Bring your camera and zest for adventure."

[Source]

[View on Google Maps](#)

© 2013 Good









© 2013



Digitized by Google



© 201




© 2013 Google



© 201



A photograph of a red brick wall. On the left side, there is a white vertical pipe. The wall is made of red bricks with light-colored mortar. The lighting is somewhat dim, and the image has a slightly grainy texture.

© 2010

3 Google

© 2013 Google





[https://www.google.com/
streetview/#japanese-
mountains/fuji-summit](https://www.google.com/streetview/#japanese-mountains/fuji-summit)

×

Japanese Mountains







Fuji Summit

[View on Google Maps](#)













Digitized by Google



© 2013 Google

©2013 Google







Digitized by Google



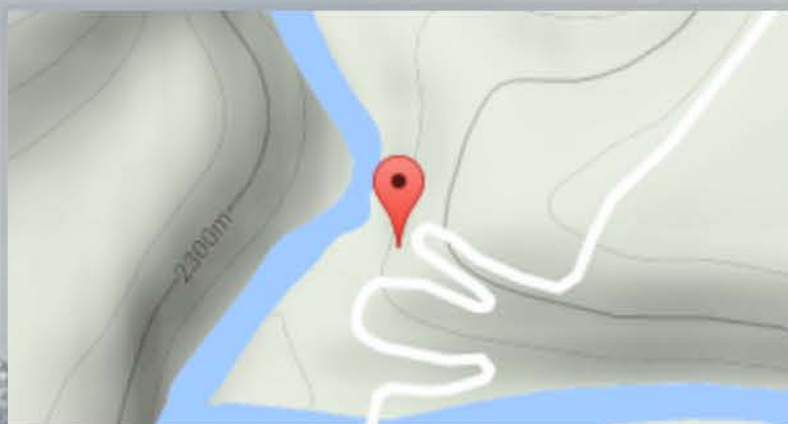


[https://www.google.com/
streetview/#kyrgyzstan-
highlights/eki-naryn-valley](https://www.google.com/streetview/#kyrgyzstan-highlights/eki-naryn-valley)

✕ Kyrgyzstan Highlights







Eki-Naryn Valley

[View on Google Maps](#)























© 2016 Google







An aerial photograph of a steep, forested mountain slope. A road or path runs diagonally across the upper portion of the image. A small, light-colored building or structure is visible on the slope. The terrain is covered in dense vegetation, with some areas appearing lighter, possibly due to snow or bare ground. A watermark is visible across the middle of the image.

©2016 Google

©2016 Google



©2016 Google



[https://www.google.com/
streetview/#discover-dubai/
burj-khalifa](https://www.google.com/streetview/#discover-dubai/burj-khalifa)







Burj Khalifa

Burj Khalifa, known as Burj Dubai prior to its inauguration, is a skyscraper in Dubai, United Arab Emirates. It is the tallest man-made structure in the world, standing at 829.8 m (2,722 ft). The building officially opened on 4 January 2010, and is part of the new development called Downtown Dubai.

[Source]

© 2013









© 2013 Getty Images



©2013 G



Digitized by Google

© 2011

[https://www.google.com/
streetview/#grand-canyon/
colorado-river-black-bridge-
view](https://www.google.com/streetview/#grand-canyon/colorado-river-black-bridge-view)

× Grand Canyon







Colorado River - Black Bridge view

The Colorado River is the principal river of the southwestern United States and northwest Mexico. The 1,450-mile (2,330 km) river drains an expansive, arid watershed that encompasses parts of seven U.S. and two Mexican states.

[Source]

[View on Google Maps](#)



2013 Google



©20

13 Google



© 2013 Google









© 2013

Google

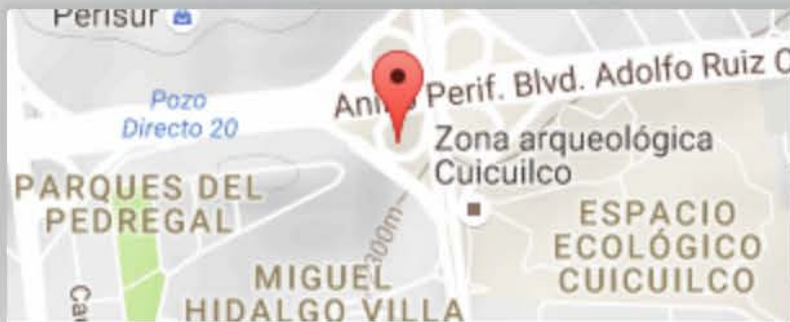




[https://www.google.com/
streetview/#ruta-de-la-
amistad-the-road-of-mexico-68/
ruta-de-la-amistad-senales-o-
la-herradura-mexico-1](https://www.google.com/streetview/#ruta-de-la-amistad-the-road-of-mexico-68/ruta-de-la-amistad-senales-o-la-herradura-mexico-1)







Ruta de la Amistad - Señales o La Herradura (Mexico)

Señales is a sculpture of large scale with 18 meters of reinforced concrete, made up of two "horns" in black and white that give meaning to the piece, alluding to the fact that the Mexican Olympics where the first in which the African countries participated jointly, excluding South Africa for its racial segregation. Created by Ángela Gurría, it is the station #1 of the Ruta de la Amistad.

U2016 Good



Digitized by Google













A 47132













©2015 Google



©2015 Google





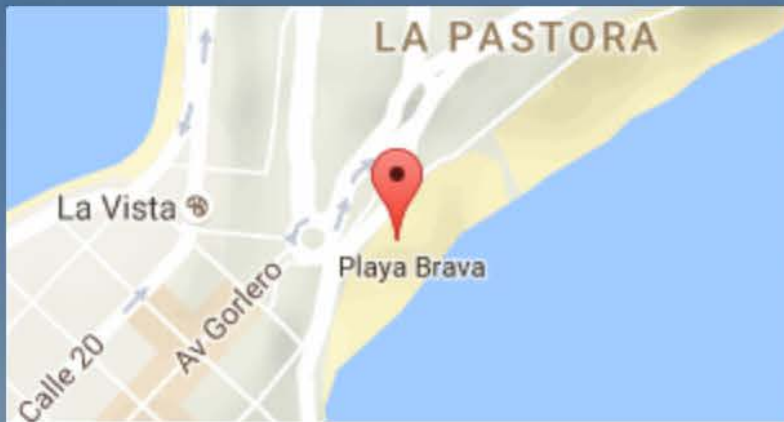


[https://www.google.com/
streetview/#uruguay-
highlights/monumento-a-los-
ahogados-la-mano](https://www.google.com/streetview/#uruguay-highlights/monumento-a-los-ahogados-la-mano)

✕ Uruguay Highlights







Monumento a los ahogados - La Mano

La Mano (The Hand) is a sculpture in Punta del Este by Chilean artist Mario Irarrázabal. It depicts five human fingers partially emerging from sand and is located on Parada 1 at Brava Beach, in Punta del Este, a popular resort town in Uruguay. It is also known as either Los Dedos (The Fingers), or Hombre emergiendo a la vida (Man



Digitized by Google









Digitized by Google





©2015

Google



6/20

Km/h

001018750 Gro

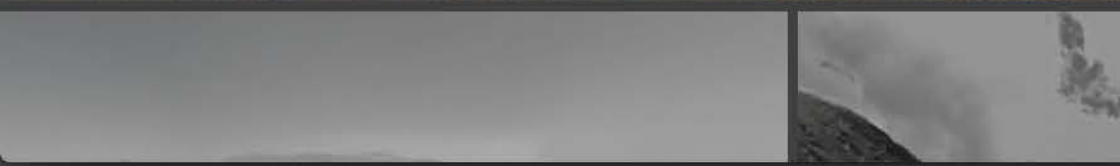




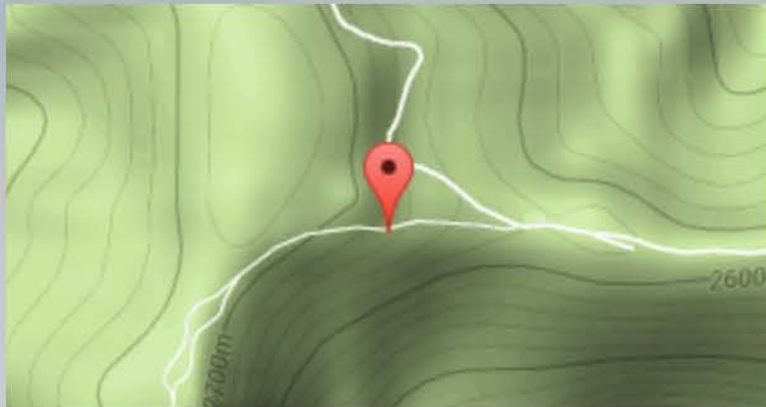


2015 Google

[https://www.google.com/
streetview/#mexico-national-
parks-and-protected-natural-
areas/reserva-de-la-biosfera-
sierra-gorda-el-pilon-en-la-
trinidad-zona-de-influencia](https://www.google.com/streetview/#mexico-national-parks-and-protected-natural-areas/reserva-de-la-biosfera-sierra-gorda-el-pilon-en-la-trinidad-zona-de-influencia)







Reserva de la Biosfera Sierra Gorda - El Pílon en la Trinidad (Zona de Influencia)

The Sierra Gorda Biosphere Reserve is a protected natural area in the center of Mexico. It is located in the northeastern of Querétaro, covering about a third of it. It has an area of 383.567 hectares, in a segment of the Sierra Madre Oriental. It

©2015 Google



An aerial photograph of a forest. The top of the image shows a mix of green and brown, possibly indicating different types of trees or a forest edge. The middle section is a large, dark, dense area of forest. The bottom section shows a lighter green, more open area, possibly a clearing or a different type of vegetation. A copyright watermark is visible in the center of the image.

©2015 Google



2016 Google







©2015 Google

2415 Gordin





